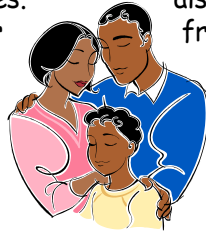




New Foundations, Inc.

Welcome

Welcome to New Foundations' quarterly newsletter. Our objective is to keep our staff, foster parents, children and other social service professionals informed as to what is happening in each of our offices. Since our newsletter will be available to view on our website, we will use first names only in conjunction with the children placed in our



care. We are developing web pages to display our children's drawings and paintings, so please submit any artwork you would like to have posted to your case manager, supervisor or recruiter. We would also like to hear from our foster families and our teenagers about your experiences with New

Foundations and the foster care system, so we also encourage you to submit your accounts or stories to your case manager, supervisor or recruiter as well. By sharing your accounts on our website, we would like to provide a better understanding of the rewards and challenges of foster parenting to prospective foster parents and other interested parties.

Volume 2, Issue 4

December 2006

Mission Statement

New Foundations, A New Beginning for Children and Families

Timely Tips Transporting Infants & Toddlers

Parents should use a rear-facing infant car seat for children who are up to one year old or weigh less than twenty pounds. Parents should remember that when you are attaching the infant seat to make sure that the carrying handle is facing down. The route handle strap should be in the lower slots below shoulder level. The harness clip should be fastened at armpit level. Parents should make sure harness straps are snug and install the child passenger restraint at no greater than a 45 degree angle. Most importantly, never place a rear facing infant seat in the front seat with an airbag.

For children who are older than one year old and weigh twenty to forty pounds, parents should use a forward-facing car seat. The route harness straps should be in the upper slots at or above shoulder level. The harness clip should be fastened at armpit level. Again, parents should remember to always keep the harness straps snug.

About New Foundations

New Foundations is a private, non-profit child welfare agency that is licensed by the Department of Public Welfare to provide service to children and

families in Philadelphia and the surrounding counties. We currently serve 210 children and their foster and biological families in the following ways:

- Foster Care Services
- Kinship Care Services
- Aftercare Services
- Adoption Services
- SCOH Services

Program Office News

New Foundations has opened a small office in Berks County this past quarter and is moving our office in Chester to larger accommodations this month. The Berks County office is located at 697 Reading Ave. Reading, PA 19611. The Reading office phone number is 610-372-5741. The new address for the Chester office is: 1601 Park Lane Road, 1st Floor,

Swarthmore, PA 19081. The phone and fax numbers will remain the same. Although we are moving to a different town, the new office in Swarthmore is just a few miles from our old office and is accessible by both bus and train.

As the holidays rapidly approach, New Foundations' staff is looking forward to their annual holiday party, which will include dinner and

dancing, on Friday evening December 8 at the Chateau in Philadelphia. Parties for our children will be held in both the Center City and Chester(Swarthmore) offices later in December with a visit from Santa as well as gifts, food and games for all.

Inside this issue:

Center City Office	2
Chester City Office	2
Foster Parent Training	2
Recruitment	3
Adoption	3
After Care	3
SCOH	3
Play It Safe	4

Center City Office

The Center City office is doing a wonderful job as they continue to manage over 150 children in foster and kinship care. Hats off to the Center City office, that is fully staffed with case managers, secretaries, and transporters, all working together as an effective team, along with supervisors Deatrice Fields and Sherron Samuels. Sherron has returned to the Center City office from the Chester office this quarter. New Foundations also welcomes Jennifer Shoffner, a newly hired case manager, with open arms as she starts her journey of working with children and their families. In addition, we are sad to see Kevin Story leave and start a new position with another agency. Good Luck Kevin & Jennifer.

The Center City team works to achieve permanency by reuniting children with their biological families as well as through adoption and permanent guardianship. Center City gives special thanks to all of our foster parents who provide nurture and love to our children in need and are a wonderful asset to our team.

Congratulations to casemanager Nichette Robinson who has announced that she is expecting. Welcome back to casemanager Danielle Stocklin who recently enjoyed a vacation in Cancun.

Chester Office

Corrine Upshur has rejoined New Foundations as the Chester office supervisor. Corrine previously held the same position in the Chester office and has past supervisory experience in the Center City office as well. Corrine returns after a year and a half hiatus. Welcome back Corrine. Sherron Samuels has joined the supervisory staff in the Center City office. The Chester office also welcomes new casemanager, Marsha Komara. Marsha graduated from Stonybrook University in New York with a B.S. in Public Health. Marsha worked as a Certified Nursing Assistant while going to school.

Best wishes for success to secretary Lois Loftin, who is preparing the Christmas production with the drama ministry at Jones Memorial Baptist Church. Best wishes to Brittany as she continues her classes in tap at the School of Dance Art. We are all looking forward to a winning season for Montae who plays football for the Martin Luther King High School JV team. Best wishes to Devine in her cheerleader competition on Dec. 12.

Congratulations to the foster parents Ms Doris Gibson, Lynn & Milton Shelton-Albergotti, & Sharonda & Michael Israel for winning foster parent of the month for August; Ms. Trina Harrison for the month of September; and Tanya Smith for the month of October. Each foster parent was awarded a certificate of appreciation and was also acknowledged by the foster parents when they received their monthly reimbursement. The Center City team also awarded the foster parents with gift cards to Wal-Mart in addition to their certificates.

For the month of November, Center City decided to award two foster parents with Thanksgiving Day baskets to help towards their holiday dinner for foster parent of the month. Congratulations to Karima Abdul Haadi & Nora & Joseph Cross for winning foster parents of the

month for November.

The Center City office hosted foster parent training in November on "talking to your teens about sex."

Yvone Jones continues to further her education at the University of Phoenix: Yvone is, majoring in Criminal Justice and Business Management. In January of 2007 Nafeesah will be attending the graduate program at Temple University majoring in Early Childhood Education. Nafeesah has recently celebrated her one year anniversary with New Foundations. Casemanager Nichette Robinson is attending Lincoln University in pursuit of her Master's in Human Services. Keep up the good work, team!

The Center City office will be hosting a Christmas Party for the children at New Foundations. Each child will receive a gift from their case manager, and have the opportunity to take a picture with Santa. The children will be able to enjoy face painting, games, a dance contest, food and more fun. The date will be announced, and families will receive invitations in the mail.

Timely Tips Transporting Older Children

Children who are less than four feet nine inches tall and weigh between forty and eighty pounds should use a forward facing, belt positioning booster seat with a lap and shoulder seat belt. Remember to place the shoulder strap over the shoulder and snug across the chest. The lap belt should be placed low and tight on the hips, not over the stomach.

Passengers who are at least four feet nine inches tall and weigh more than eighty pounds should use a lap and shoulder seat belt. The shoulder belt fits over the shoulder and across the chest. The lap belt should fit low and tight on the hips, not over the stomach. The shoulder belt should never be placed under arms or behind the back. New Foundations hopes these tips are helpful to ensure the safety of your children while traveling at any time of the year.

Upcoming Foster Parent Trainings

Please contact your office for dates, times and topics.

Recruitment

The recruitment unit welcomes Allison Davis to our team. Allison joined us in September and has been recruiting families in the Berks County area. New Foundations was able to open an office in Reading during the last quarter and Allison is now calling Reading home. Supervisor, Sandie Caulder reports that Allison is a graduate of Bloomsburg University with her BS in Early Childhood and Elementary Education. Allison has worked as a teacher and prior to joining New Foundations was a Residency Coordinator and Senior Data Manager at Geisinger Medical Center.

Recruiter Tenesha Williams attended the Pennsylvania State

Foster Parent Association's 30th Annual Conference in Grantville, PA from October 19 - 21. Tenisha was impressed with the training provided and enjoyed meeting resource families from throughout the state. Recruiter Taren Daniels attended the Training on Act 160 and the Resource Family Registry on October 30 at the Radisson Valley Forge in King of Prussia. Recruiter Shep Garner was profiled in the Delaware County Daily Times as a member of the Chester Rotary Club and for the outstanding work that they do. In addition to the above, the recruitment team was able to approve eight resource families this past quarter. Welcome to our new families.

Services to Children in Their Own Homes (SCOH)

The SCOH staff has successfully discharged ten families during the last quarter. The school year started with our staff assisting some families with obtaining school supplies. All children are back to school and excited about the current school year. Congratulations to two of our casemanagers; Nia, who was married on 9/8/06 and Christiana, who married on 9/30/06. Christiana has accepted a Music teacher position at a Charter School, which was her dream job. Congratulations and best wishes to both from New Foundations. Carla Starling has joined the SCOH team to replace Christiana. We would like to welcome Carla and we know that she will be a great help to all of her clients. SCOH provided our annual Thanksgiving Baskets to our families on 11/21/06. The baskets included: a turkey, brown & serve rolls, broccoli florets, apple pie, 5 apples, 5 oranges, frozen sweet potato patties, stuffing, 4lb. white potatoes, onions, celery, 2 cans of corn and 2 cans of green beans. We hope that our families enjoyed the food and had a wonderful holiday together.

Adoption

We are pleased to share that New Foundations' adoption staff has successfully finalized two adoptions between September 1, 2006 and December 1, 2006. We would like to extend our congratulations and ongoing support to the families who finalized their adoptions to date.

We are currently working on 20 Performance Based Contracting (PBC) adoptions through the Philadelphia Department of Human Services. Through our SWAN contract, we are currently working on seventeen units of service with Delaware County CYS and two units of service with Somerset County CYS. We also have one waiting family in study. In addition, we are currently working on our proposal to provide Post-Permanency Adoption Services. Tanya Jarrett is the

South East Regional Technical Assistant for New Foundations, Inc. A site visit was held on December 11, 2006 at the New Foundations Center City office.

Our Adoption Coordinators, Amy Morris and Sabrina Bell, attended the SWAN Fall Regional Meeting on September 13, 2006, which focused on post-permanency services. They also attended the SWAN Fall Quarterly on October 31, 2006, which focused on engaging youth and positive youth development.

Amy continues to attend the monthly DHS Supervisor's forums, which have been focusing on developing the child and family profiles and child preparation services. Sabrina has been attending the Delaware Valley Adoption Council (DVAC) monthly meetings. Topics included empowering families, achieving

child-friendly transitions, and adoption ceremonies.

We are pleased to announce that Amy Morris has been promoted from Adoption Coordinator to Adoption Supervisor. Her date of transition was December 1, 2006. If you, or anyone you are connected with is interested in applying for the vacated position of Adoption Coordinator, please visit our website to view the basic qualifications for the position.

Amy continues to attend graduate school at West Chester University. Congratulations to Sabrina Bell for completing the MBA program through The University of Phoenix. If you, or anyone you are connected with is interested in learning more about adopting a child, please contact our adoption coordinator at (215) 203-8733.

Aftercare

Aftercare Services are provided to children and families who have achieved permanency through Reunification and Permanent Legal Custodianship (PLC). Services are provided by New Foundations Aftercare case managers for 12 months post permanency.

New Foundations Aftercare program

services 18 families. New Foundations welcomes Tia Leary to the Aftercare Unit. Both Aftercare case managers combined has successfully discharged 8 families from the Aftercare Unit in the last quarter.

Elena received outstanding grades on her report card this semester. She is preparing for college next

year. Damaris recently graduated from OVR (Office Of Vocational Rehabilitation).

The Aftercare supervisor and case managers have demonstrated a genuine commitment to empowering our children and families and have provided excellent service during the last quarter.

Center City Program Office
 1341 North Delaware Avenue · Suite 502
 Administrative Office · Philadelphia, PA 19125
 (215) 203-8733
 (215) 203-8184 (Fax)
 1-877-NFI-4KID (1-877-634-4543)

New Foundations, Inc.
 A New Beginning For Children
 and Families



Swarthmore Program Office
 1601 Park Lane Road
 Swarthmore, PA 19081
 (610)-876-4474
 (610) 876-1944 (Fax)

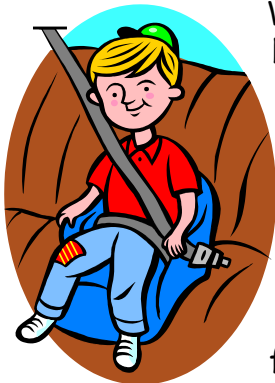


Reading Program Office
 697 Reading Avenue
 Reading, PA 19611
 (610) 372-5741

DON'T FORGET...

Don't forget that we are always looking for new foster parents so we are better able to match the children coming into our care with qualified and caring foster families. If you, or anyone you are connected with is interested in learning more about foster parenting, please contact our recruitment or case management staff at (215) 203-8733, (610) 876-4474, 1-877-NFI-4KID (1-877-634-4543) or visit our website at www.nfi4kids.org.

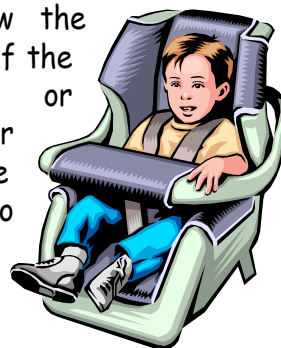
Playing It Safe



With the holidays just around the corner, you and your children will probably be doing a lot of fun, festive holiday traveling. Whether it is just across town to Grandma's house or to that favorite Aunt's house miles away, remembering to keep children safe is important. One area of safety is making sure that the car is safe, as you and your children spend countless hours on the go. Car accidents are the leading cause of injury and death in children after the first month of life. Here are some helpful tips to remember when



traveling. Always use a car seat that is age and size appropriate for the child. Almost all children badly injured or killed in car accidents were either not properly restrained or sitting in car seats that were not properly installed. Always follow the instructions of the manufacturer or contact your local police department to install it for you. Also, never let the child ride anywhere but in the car seat. i.e. cab of pickup truck, storage area of station wagons, etc.



- Always drive with children in the back seat. Air bags may cause damage to young children.
- Never leave a child alone in the car!

- Do not smoke in the car.
- Make sure automatic doors and windows are locked and are set for each ride.
- Lead by example and buckle up every time you are in the car. Be sure to stay alert and drive safely.



By practicing these helpful reminders, you will ensure that the precious cargo you are transporting will arrive safely at their destinations without any injuries and ready to enjoy the holiday season.